

Motorola USB web camera Driver USER'S MANUAL

CONTENTS

INTRODUCTIONS	1
SYSTEM REQUIREMENTS	1
Hardware Requirements	1
Software Requirements	1
NOTE	1
INSTALLING DRIVER	2
Windows 2000	2
Windows XP	5
USING VIDEO CAPTURE SOFTWARE	10

INTRODUCTIONS

The Motorola USB web camera driver helps you to capture images from the web camera device and adjust some of the video and camera control properties. To capture images from the device, you need application software such as MSN Messenger.

SYSTEM REQUIREMENTS

Hardware Requirements

- Multimedia PC with Pentium level processor
- At least 64 MB memory
- At least 30 MB free space in hard drive
- At least 16 bit display
- USB port on PC

Software Requirements

OS : Microsoft Windows XP / Windows XP SP1 / Windows 2000 / Windows 98 SE
DirectX 8.1 version or later.

NOTE

- Please do NOT connect more than one Phone web camera to PC
- In image capture process, please do NOT break apart USB cable, otherwise, the operation may lead to errors, or you may restart the application software.
- Does not need to install the driver in Windows XP Service Pack 2 or above.

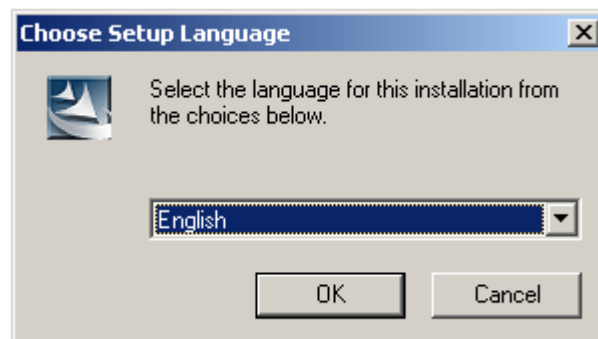
INSTALLING DRIVER

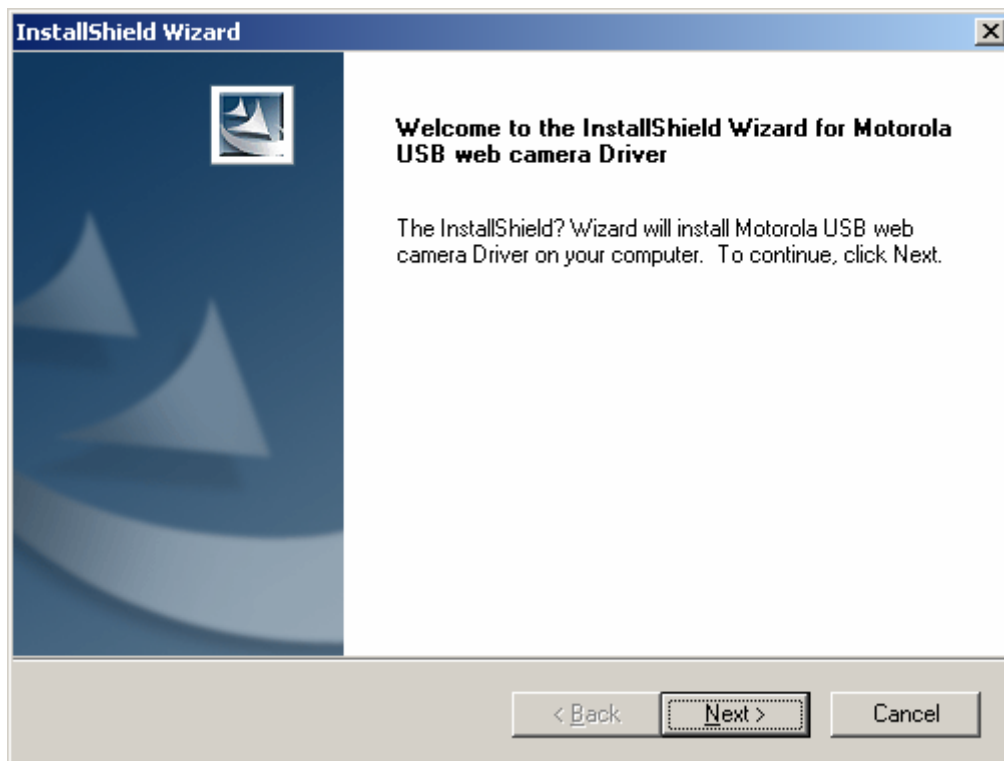
Note :

- Recognizing that the phone is NOT connected to the PC
- The description of this section is based on the Windows 2000 and Windows XP SP1, In other versions of Windows, the actual content on the screen with the steps might be different.

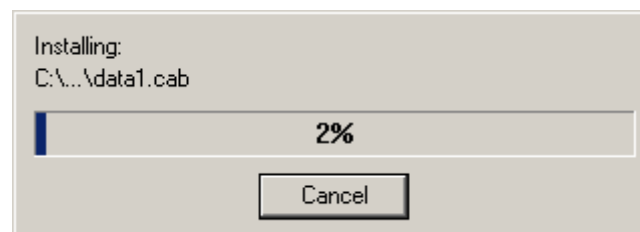
Windows 2000

1. Run Setup.exe in the software packet and follow instructions.
2. Select the language for the installation.

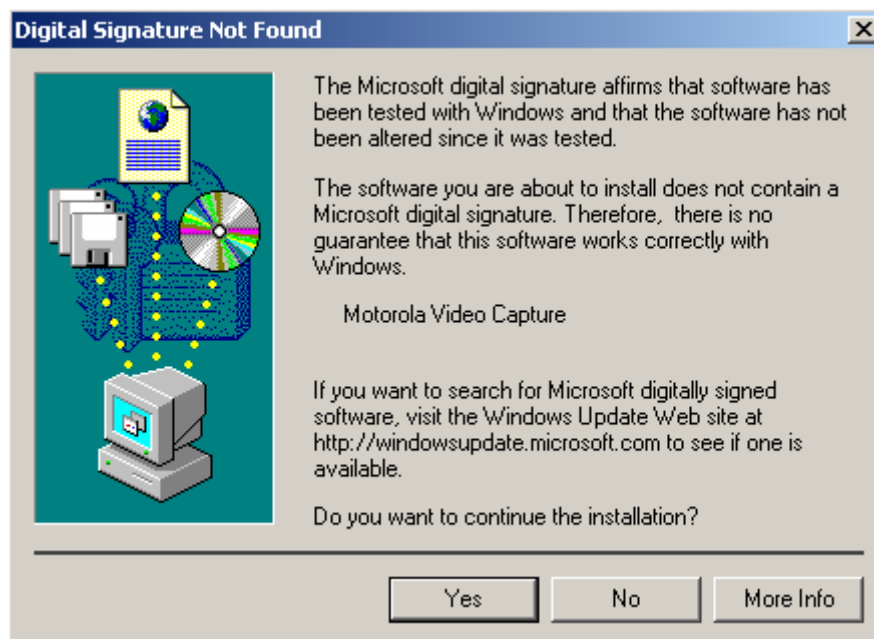




3. Press "Next" and install the driver to PC.

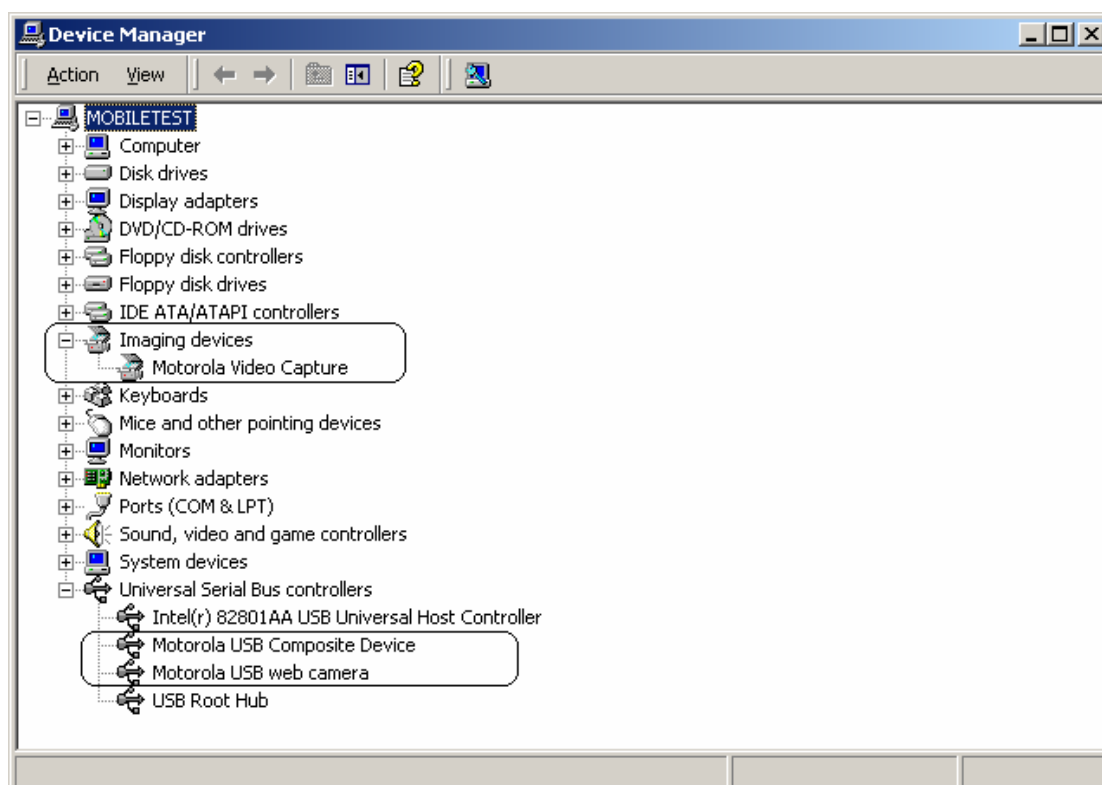


4. After Installed, connect the Phone (web camera) to PC .
5. On first run, the Operating System will check the device and then install the device.



press "Yes" to continue.

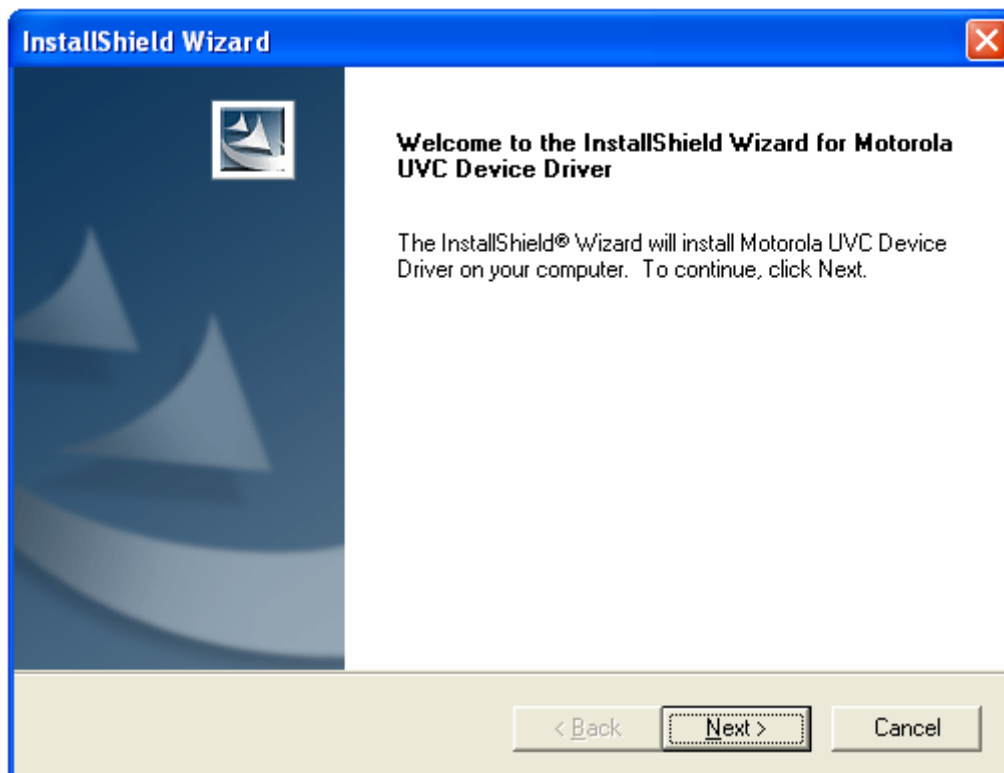
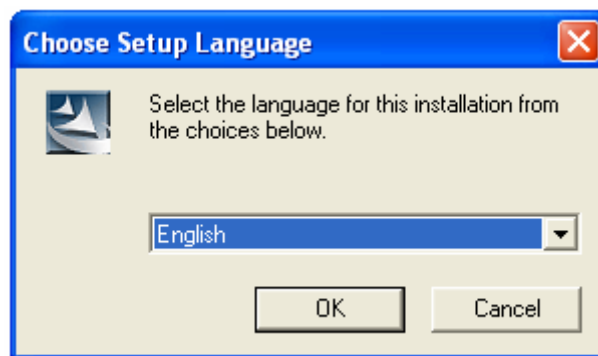
If the installation is completed successfully, you can enjoy your web camera with QQ MSN and other video capture software. (see "USING VIDEO CAPTURE SOFTWARE").



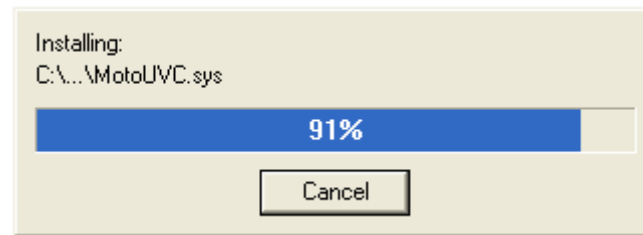
After connections established, device Manager will automatically activate the web camera.

Windows XP

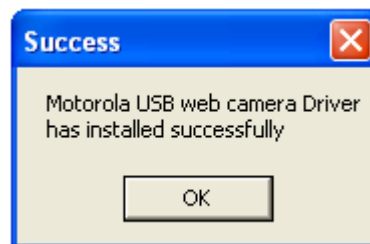
1. Run Setup.exe in the software packet and follow instructions.
2. Select the language for the installation.



3. Press "Next" and install the driver to PC.



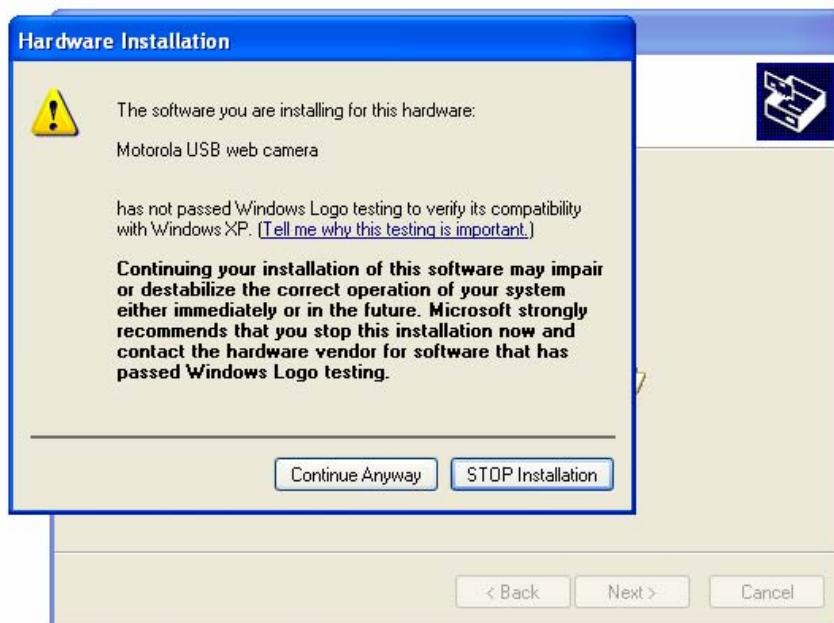
4. Then the driver has installed successfully.



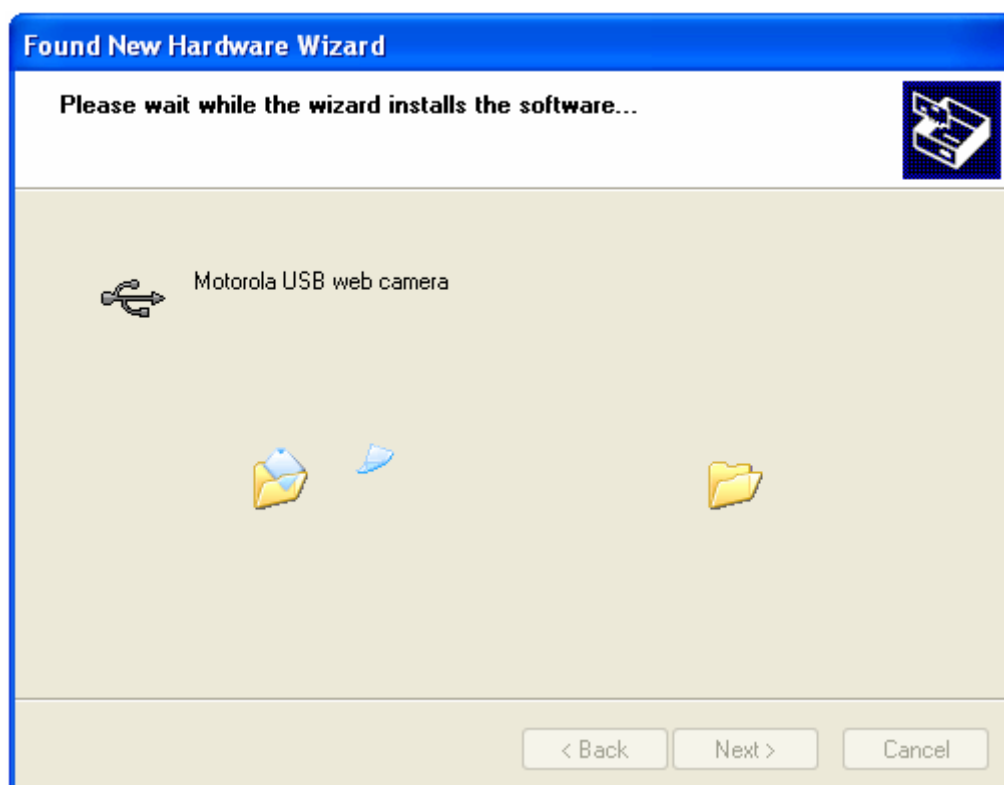
5. Plug USB cable into the device and then plug the USB cable into the USB port on the computer. "Found New Hardware" dialog box will appear (may take a few seconds)



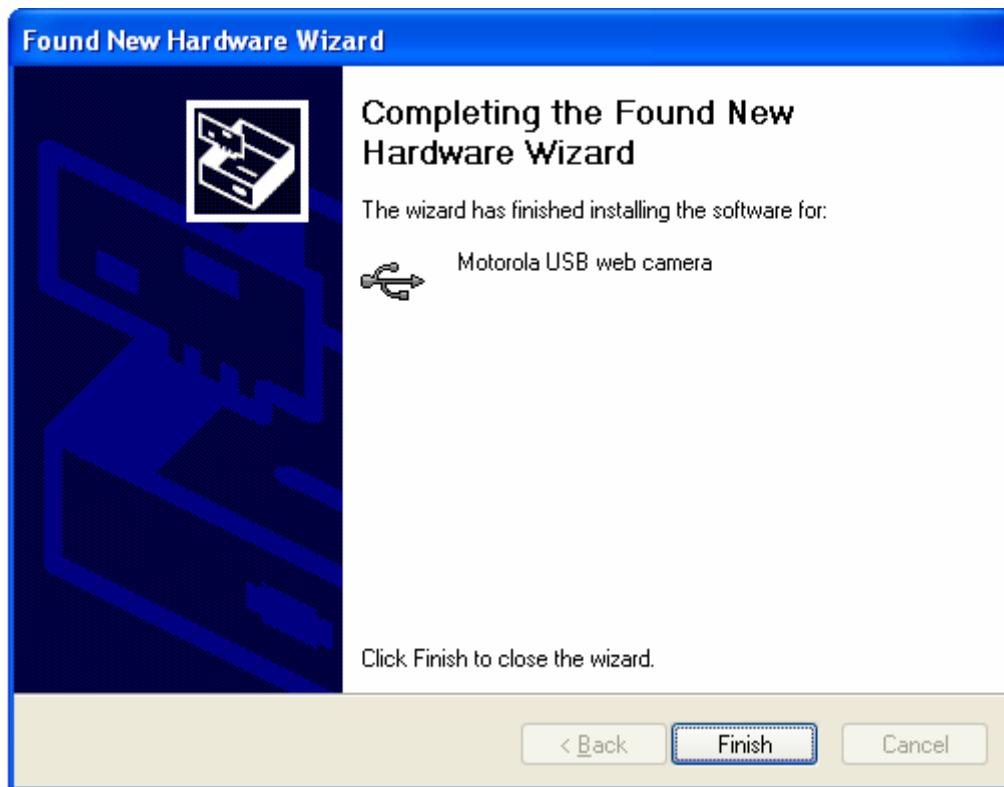
6. "Hardware Installation" dialog box, notifies about Windows Logo testing, click on [Continue Anyway]



7. "Found New Hardware" dialog box, "installing software"



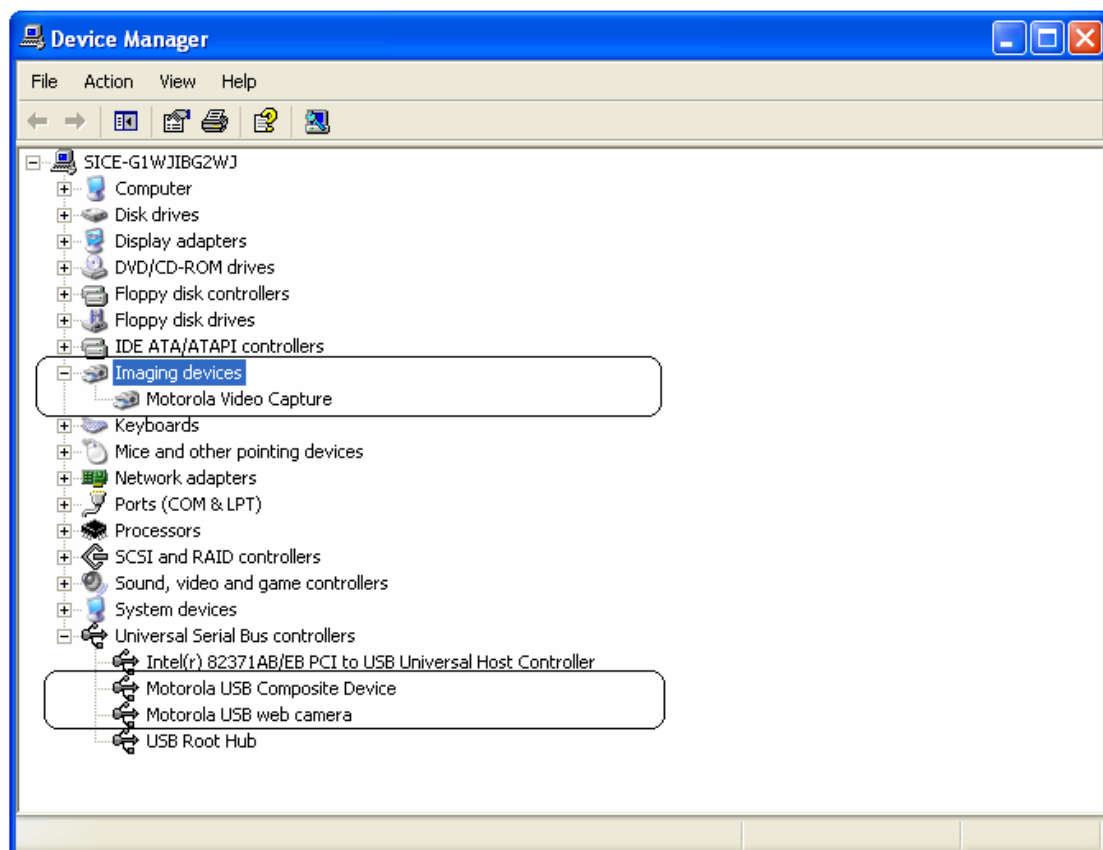
8. "Found New Hardware" dialog box, "has finished", click on [Finish]



Now, the Motorola USB web camera driver has installed complete. The OS has installed device successfully.

Note :

- The driver installation installs Motorola USB Composite Device driver, Motorola USB web camera driver and Motorola Video Capture driver to the system.
- There might be more than one "Found New Hardware" process.

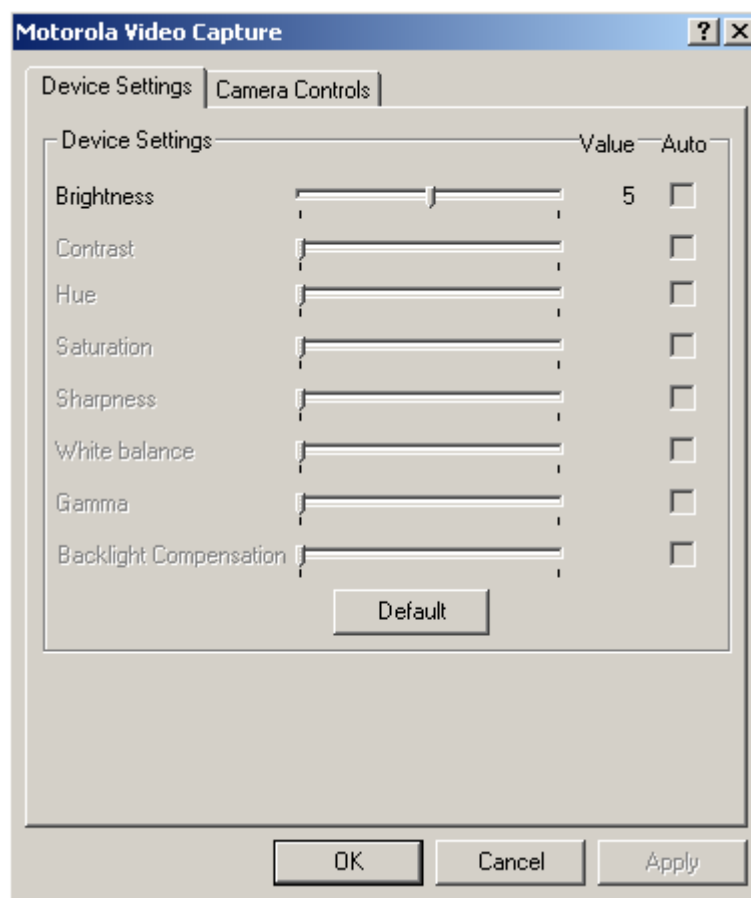


The Motorola USB web camera driver has installed.

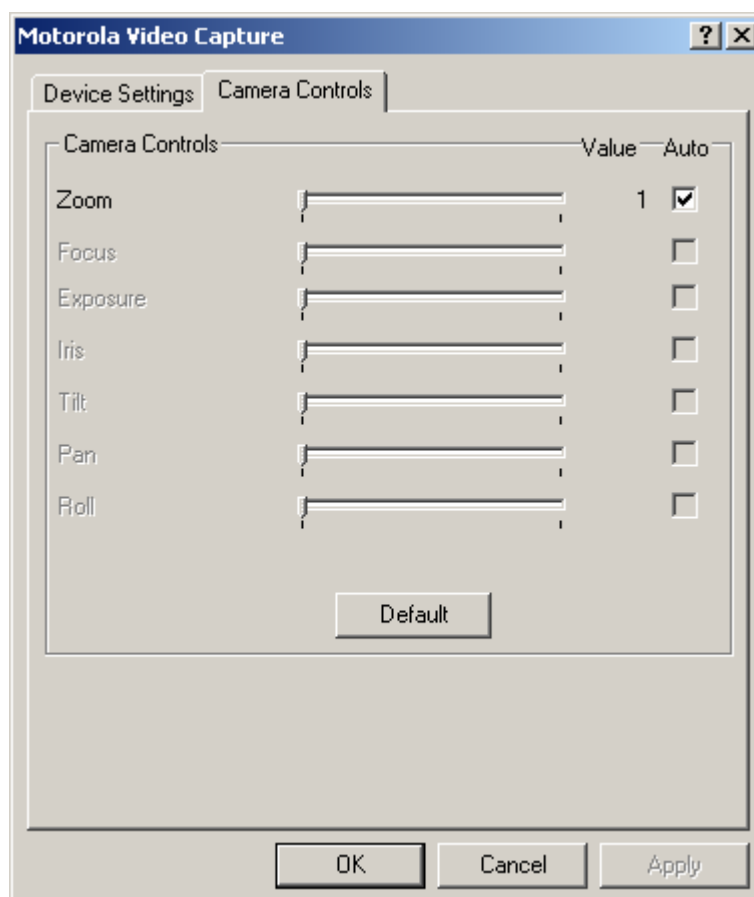
USING VIDEO CAPTURE SOFTWARE

Select “Webcamera” Mode in “USB Mode”, and connect phone to PC via USB port, then the web camera is active.

Run video capture software (such as NetMeeting) to get images from the device. You can adjust the property of the pictures via the video capture software. The device support Brightness and Zoom camera control.



set brightness property



set zoom property